

## REMS Akku-Press XL 45 kN 22 V ACC

Cordless radial press XL 45 kN  
with automatic circuit control

Universal, powerful electric tool with automatic circuit control for producing XL pipe pressing joints for all common pressfitting systems. Thrust force 45 kN. Li-Ion 22V Technology. For battery and corded operation.

Pipe pressing joints XL	Ø 64 – 108 mm
	Ø 2½–4"

Complete range of REMS pressing rings XL for all common pressfitting systems, see page 182–212.

**REMS Akku-Press XL 45 kN 22 V ACC – the powerful one with 45 kN thrust force. Pressing of Ø 64 – 108 mm in a single action. Anti-vibration system. Super fast, e.g. Geberit Mapress stainless steel Ø 108 mm in just 15 s. With automatic circuit control. Secure seating of adapter tongs by automatic locking.**

**Li-Ion 21.6 V, 5.0 Ah battery, for approx. 150 pressings Geberit Mapress stainless steel Ø 108.0 mm with one battery charge.**

### Pressing rings XL for all common systems

Full range of REMS pressing rings XL for driving by REMS Akku-Press XL 45 kN 22 V ACC (page 182–212). Highly durable pressing rings XL made of tenacious, specially hardened special steel. Pressing contours of REMS pressing rings XL are system-specific and correspond to the respective pressfitting system. Thus perfect system conformity, safe press jointing.

### Adapter tongs Z7 XL 45 kN

For driving REMS pressing rings XL by REMS Akku-Press XL 45 kN 22 V ACC adapter tongs Z7 XL 45 kN are required.

### Design

Compact, robust, job site-proven. Small in size, slender design, drive unit with battery only 6.5 kg. Long working stroke for pressings in a single action. Super fast, e.g. Geberit Mapress stainless steel Ø 108 mm in just 15 s. Drive unit with inserted pressing tongs can be put down on the battery ready to pick up. Ergonomically designed housing and soft grips. LED work light for illuminating the work place. Machine status check. Swivelling pressing ring seat, rotation angle > 360°. Secure seating of adapter tongs by automatic locking.

### Anti-vibration system

Special drive technology with weight balancing and soft grips for low-vibration, fatigue-free pressing.

### Pressing operation by touch-control with ACC

For reliable service, operating and functional safety. Automatic retraction after completion of pressing operation (automatic circuit control).

### Drive

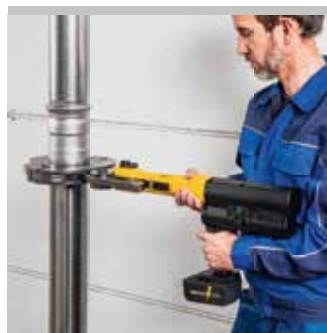
Enormous thrust and pressing force for fast and perfect press jointing. Thrust force 45 kN. Powerful electro-hydraulic drive with powerful battery motor 21.6 V, 380 W output, robust planetary gear, eccentric dual-piston pump and compact high power hydraulic system. Safety tip switch.

### Battery or mains operation

Li-Ion 22V Technology. Highly resistant Li-Ion 21.6V battery with 5.0 or 9.0Ah capacity, for long service life. Light and powerful. Li-Ion 21.6V, 5.0Ah batteries for approx. 150 pressings, 9.0Ah for approx. 270 pressings Geberit Mapress stainless steel Ø 108.0mm with one battery charge. Graduated charging state display with coloured LED. Operating temperature range – 10 to + 60 °C. No memory effect for maximum battery power. Rapid charger Li-Ion 100–240V, 90W. Rapid charger Li-Ion 100–240V, 290W, for shorter charging times, as accessory. 220–240V/21.6V, 40A voltage supply for mains operation instead of Li-Ion battery 21.6 V, as accessory.



Tested by electrosuisse >>



German Quality Product



Supply format

**REMS Akku-Press XL 45 kN 22V ACC Basic-Pack Z7.** Cordless radial press 45 kN with automatic circuit control for making press joints XL Ø 64–108 mm, Ø 2½–4". For driving REMS pressing rings XL. Swivelling pressing ring seat with automatic locking. Electro-hydraulic drive with powerful battery motor 21.6 V, 380 W, robust planetary gear, eccentric dual-piston pump and compact high power hydraulic system. Anti-vibration system. Safety tip switch. LED work light. Battery Li-Ion 21.6 V, 5.0 Ah, rapid charger Li-Ion 100–240 V, 50–60 Hz, 90 W. Adapter tongs Z7 XL 45 kN. In XL-Boxx system case.

	Art.-No.	
	579014	

Other voltages on request.



Accessories

Description	Art.-No.	
<b>REMS Akku-Press XL 45 kN 22V ACC drive unit,</b> without battery	579001	
<b>Adapter tongs Z7 XL 45 kN</b> for driving REMS pressing rings 64.0–108.0 XL (PR-3S), 2½–4" XL (PR-3S), 2½–4" XL (PR-3B) with REMS Akku-Press XL 45 kN 22V ACC	579123	

**REMS pressing rings XL** see page 182–212

<b>Battery Li-Ion 21.6 V, 5.0 Ah</b>	571581	
<b>Battery Li-Ion 21.6 V, 9.0 Ah</b>	571583	
<b>Rapid charger Li-Ion 100–240 V, 50–60 Hz, 90 W</b>	571585	
<b>Rapid charger Li-Ion 100–240 V, 50–60 Hz, 290 W</b>	571587	
<b>Voltage supply 220–240 V/21.6 V, 50–60 Hz, 40 A,</b> for mains operation instead of battery Li-Ion 21.6 V	571578	
<b>XL-Boxx system case with inserts</b>	579601	

